

WE'RE HERE FOR YOU.

If you or someone you know is abusing drugs, alcohol or pharmaceuticals, our proven, evidence-based treatment methods make a lasting recovery possible. We offer medication-assisted treatment, outpatient counseling, and other individualized treatment plans to help transform lives, families, and communities we serve.

LOCATION:

Hazleton Treatment Services

534 W. Broad Street

Hazleton | PA | 18201

PHONE : 570-497-5173

YOU CAN CHANGE YOUR LIFE. **START TODAY.**

570-497-5173



National Association
for Behavioral Healthcare
Access. Care. Recovery.



Member:



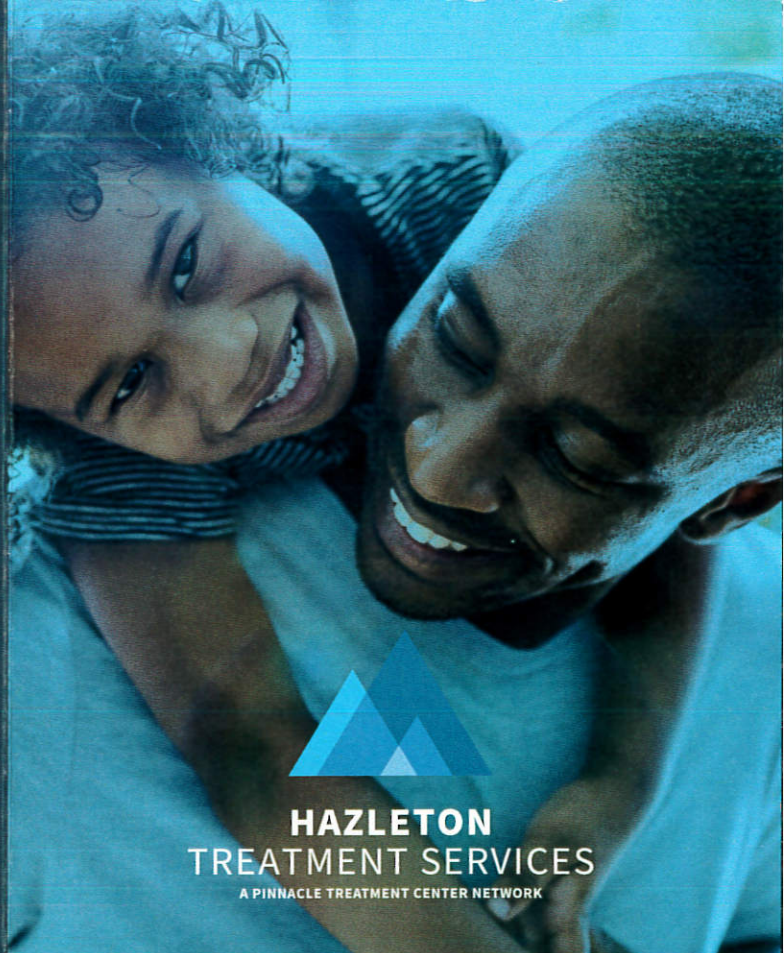
NATIONAL ASSOCIATION
OF
ADDICTION TREATMENT PROVIDERS



**HAZLETON
TREATMENT SERVICES**
A PINNACLE TREATMENT CENTER NETWORK

Change your life today, call now:
570-497-5173 or visit pinnacle-treatment.com

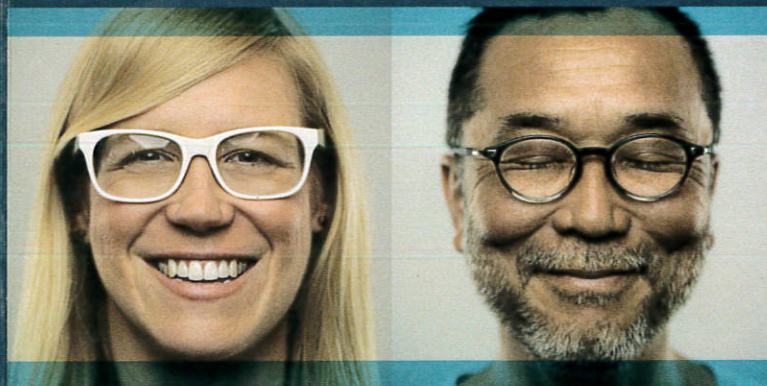
Overview TF-0521-HazTS-PA



**HAZLETON
TREATMENT SERVICES**
A PINNACLE TREATMENT CENTER NETWORK

WHERE THERE IS TREATMENT,
THERE IS HOPE.

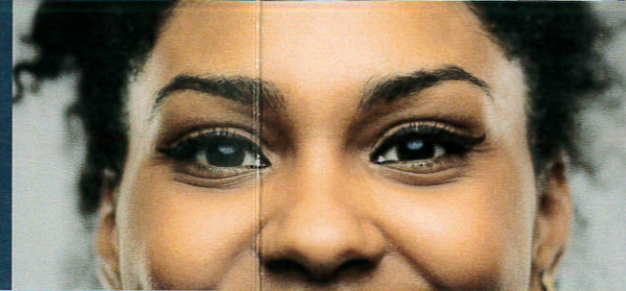
MEDICATION ASSISTED TREATMENT



YOU CAN CHANGE YOUR LIFE. **START TODAY.**
570-497-5173 | pinnacle-treatment.com



SUPPORT THAT FITS INTO YOUR LIFE



SERVICES

Supervised withdrawal from opiates
done
e & Suboxone maintenance
ounseling: individual, group, family
Services
ervices
Medical Services
utical Services
Services (serology, urine testing, TB, pregnancy
reening)
nd linkages for additional services like HIV testing,
rehabilitation, prenatal care
being part of the Pinnacle Treatment Center
hich operates thirteen opioid treatment programs
rania
intakes (available for buprenorphine patients
eling sessions

ility: Must be over 18, be using heroin, opiates or other narcotic
period of one year or more. We accept self-pay at reasonable
ith discounts available for spouses and or family members.
referral program, Medicaid, Medicare Advantage, Highmark

PENNSYLVANIA LOCATIONS

Alliance Medical

1425 Scalp Ave | Ste 175 | Johnstown | PA | 15904 | P 814-269-4700

Charleroi Treatment Services

15 Arentzen Blvd | Charleroi | PA | 15022 | P 724-565-1310

Ensign I

729 Ensign Ave | Pittsburgh | PA | 15226 | P 412-488-6360

Ensign II

739 Ensign Ave | Pittsburgh | PA | 15226 | P 412-488-6360

Greenfield Counseling

11127 Perry Hwy | Meadville | PA | 16335 | P 814-337-7431

Hanover Treatment Services

120 Penn St | Hanover | PA | 17331 | P 717-969-8400

Hazleton Treatment Services

534 W. Broad Street | Hazleton | PA | 17331 | P 570-497-5173

Miners Medical

43 S. Main St | Ste 2 | Ashley | PA | 18706 | P 570-822-5145

Mt. Pocono Medical

1151 Pocono Blvd | Unit 3 | Mt. Pocono | PA | 18344 | P 570-839-7246

Northeast Family Healthcare

1040 South West End Blvd | Quakertown | PA | 18951 | P 267-347-4560

Pinnacle Treatment Services of Aliquippa

400 Woodlawn Rd | Aliquippa | PA | 15001 | P 724-857-9640

State College Medical

3091 Enterprise Dr | Ste 150 | State College | PA | 16801 | P 814-235-6988

Summit Medical Services

3121 Smallman St | Pittsburgh | PA | 15201 | P 412-255-8717

HOURS

ADMINISTRATIVE HOURS

Monday — Friday

6:00 am - 2:00 pm

Saturday

6:00 am - 9:00 am

DISPENSING HOURS

Monday — Friday

6:00 am - 11:00 am

Saturday

6:00 am - 9:00 am

INTAKE HOURS

Appointment times vary

depending on doctor availability.

Call for information.

570-497-5173

ACCEPTING MEDICAID AND



PINNACLE
TREATMENT CENTERS

NOW AVAILABLE!

PEER SUPPORT & CASE MANAGEMENT

Need help with housing or other resources?

We are now offering
Peer Support & Case Management services
to help you connect with:

- Community living skills
- Health or dental services
- Housing
- Employment/financial
- Education
- Social services
- Development of natural supports

Services are contingent upon meeting state eligibility requirements.



TALK TO YOUR COUNSELOR TODAY



WHERE THERE IS TREATMENT, THERE IS HOPE.

MEDICATION ASSISTED TREATMENT SERVICES

SERVICES OVERVIEW

Pinnacle Treatment Centers is committed to providing safe, medication-assisted treatment and counseling for drug addiction to help patients and their families reclaim their lives and future. We provide a range of outpatient treatment options to people suffering from addiction to prescription pain pills, heroin and other opiates. Treatment is individualized based on a clinical assessment of each patient's needs.

OUR SERVICES

- Methadone Maintenance
- Vivitrol, Suboxone maintenance available at many locations
- Specialized services for pregnant women and those suffering with co-occurring disorders
- Outpatient Drug & Alcohol Counseling: Individual & Group
- Diagnostic Services
- Nursing Services
- Limited Medical Services
- Laboratory Services (serology, urine testing, TB, pregnancy and STD screening)
- Pharmaceutical Services
- Intensive Outpatient Program offered at many locations
- Referrals and linkages for additional services like HIV testing, vocational rehabilitation, pre-natal care
- Security of being part of Pinnacle Treatment Centers which operates in multiple states providing a full continuum of treatment services.
- Medically supervised withdrawal from opiates
- Safe and steady taper from methadone or buprenorphine as clinically indicated



**HAZLETON
TREATMENT SERVICES**
A PINNACLE TREATMENT CENTER NETWORK

*Hazleton Treatment Services is a Health
Department-designated Center of Excellence*

Change your life today, call now:

800-782-1520 or visit

pinnacletreatment.com

Structured treatment that
provides flexibility that works
with your **life.**

WE'RE HERE FOR YOU.

If you or someone you know is abusing drugs, alcohol or pharmaceuticals,
our proven, evidence-based treatment methods make a lasting recovery possible
to help transform lives, families, and communities we serve.

HOURS

DISPENSING HOURS

M-F 6:00 am - 11:00 am

Sat 6:00 am - 9:00 am

ADMINISTRATIVE HOURS

M-F 6:00 am - 2:00 pm

Sat 6:00 am - 9:00 am

INTAKE HOURS

Tuesday, Wednesday, Thursday

Appointment times vary depending on doctor availability.

Call for information.

YOU CAN CHANGE YOUR LIFE. **START TODAY.**

570-497-5173



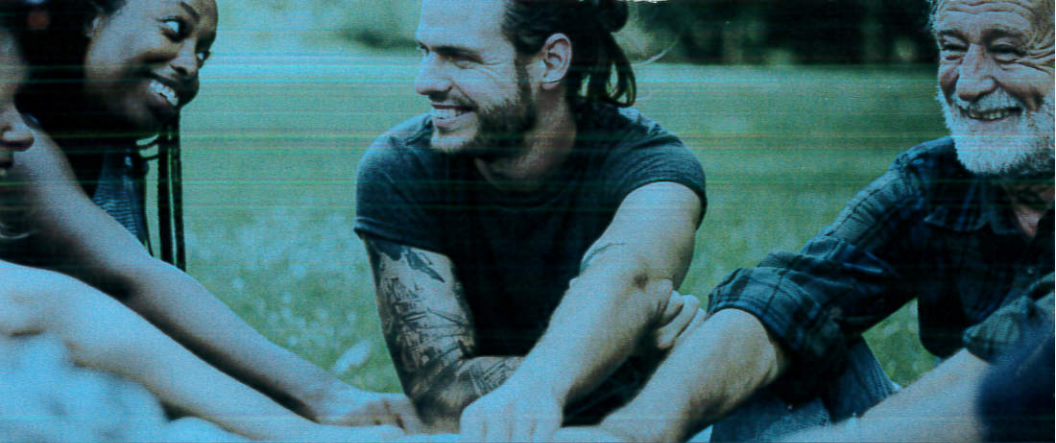
**HAZLETON
TREATMENT SERVICES**
A PINNACLE TREATMENT CENTER NETWORK

MEDICAID & MEDICARE ADVANTAGE ACCEPTED



534 W. Broad Street | Hazleton, PA 18201
570-497-5173 | pinnacletreatment.com

Overview HC-0521-HazTS-PA



PEER SUPPORT & CASE MANAGEMENT

In Your Corner Advocating for You as You Focus on What Matters Most:

Growth, Healing, And Recovery

Our Case Management and Peer Support services help you get the essential treatment, community support, and practical assistance you need to complete your program and achieve sustainable recovery.

See your counselor for more information



PINNACLE
TREATMENT CENTERS

pinnacletreatment.com

Structured treatment that provides flexibility that works with your **life**.

PEER SUPPORT

Peer support specialists encourage your personal development, foster your independence, and help you develop the skills you need to promote and guide your own recovery. Most, if not all, peer support specialists are in recovery themselves, and have lived experience.

They can empathize with you, share their experiences, advocate for you, and help you connect and communicate with family, peers, and your treatment team. Their job is to help you be you – and recover in a way that meets your needs and is best for your life and your overall recovery goals.

Peer support specialists prioritize and support your:

- Personal relationship to recovery from alcohol or drug addiction
- Ability to identify and live according to a personal set of values
- Ability to advocate for yourself during recovery
- Ability to direct your care according to your needs and goals
- Ability to create and sustain relationships that support recovery

CASE MANAGEMENT

Case managers help you locate resources, apply for resources, and make and keep appointments to access resources. They make sure you have access to everything you need to get on the road to recovery.

Case managers work to support people in recovery in areas critical to overall health and wellness, including but not limited to:

- Medical health
- Vocational opportunity
- Behavioral health
- Housing stability
- Social connection
- Financial responsibility
- Educational opportunity
- Family stability

See your counselor for more information

Services are contingent upon meeting state eligibility requirements.



PINNACLE
TREATMENT CENTERS

pinnacle-treatment.com